

CESSNA CITATION SERVICES


Modification
Repair
Overhaul

skyway-mro.com
830.900.7032



2023
SkyWay
MRO Services



 SCAN ME



Comprehensive Aircraft Support Services

SkyWay's highly experienced technical staff and MRO capabilities help keep your valuable aircraft in top condition and operating smoothly and reliably.

We Offer:

- Executive/Business Aircraft Painting
- Corrosion Control
- Composite / Sheet Metal Repair
- Metal and Brightwork Polishing
- Registration Changes
- Flight Control Removal, Balance, and Reinstall
- Weight and Balance After Paint
- Avionics Support
- Painted Placarding to Increase Longevity
- Finish and Detail Work

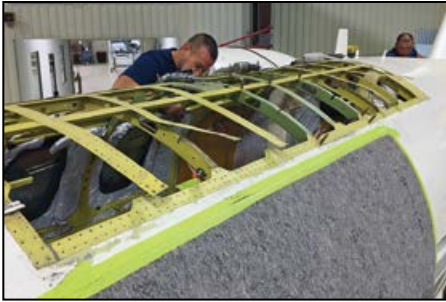
Full Support Services after Repairs or Painting

With decades of expertise with Cessna Citations and other high-performance aircraft, you can rely on our comprehensive services, including:

- Phase & Doc Inspections
- General Aviation Maintenance
- STC modifications and upgrades
- Service Bulletins and Airworthiness Inspections
- Engine Overhauls and Hot Sections
- Airframe Repairs for both conventional and composite aircraft
- Prebuy Evaluations
- Aircraft Maintenance Management
- Annual / 100 Hour Inspections
- Avionics Troubleshooting & Upgrades
- Aircraft Paint & Interior Services
- Aircraft Sales & Leasing

Call 1-830-900-7032 today for a free estimate!

Prices subject to change without notice. Product application and pricing may vary based on aircraft specifications and configuration.



One-Stop Repair, Repaint & Return to Service

Whether repairing minor dents and scuffs or hail damage, to major repairs resulting from hangar collapse or hurricane damage, our expert staffers have many years of real-world experience. Whatever you fly, this means experienced, conscientious service, focused on providing maximum value.

That approach starts with SkyWay's leadership and permeates the organization. With decades of personal experience in award-winning maintenance, repair and restoration, Mark and Conrad Huffstutler are the father and son team behind Skyway. Both are experienced pilots with multiple ratings, as well as certified A&P mechanics. They pride themselves on taking the same no-nonsense, cost-conscious approach to your aircraft as they do to their own personal aircraft collection.

A Commonsense Solution to Aircraft Painting

At SkyWay, aircraft painting is not just a service – it is an art form. With every project, we strive for maximum quality and exceptional customer service. From minor repairs, touchup and re-painting to full custom liveries, each aircraft is treated as if it were one of our very own.

Our “no-strip” paint preparation is faster, cheaper and easier on both aircraft and personnel. For many aircraft, the typical paint shop practice of chemical stripping is often wasteful and unnecessary.

We carefully hand-prepare your aircraft without expensive, toxic chemical stripping. This means:

- Less chance of external damage to antennae, pitot tubes or flight controls
- Safer conditions for paint technicians
- Reduced environmental impact
- Reduced cost
- Reduced downtime

Call 1-830-900-7032 today for a free estimate!

Prices subject to change without notice. Product application and pricing may vary based on aircraft specifications and configuration.

WWW.SkyWay-MRO.COM



Citation Cabin Step Upgrade

SkyStep's enhanced design eliminates the shortcomings of the original factory step, offering a safer and more robust alternative at a far lower price than Cessna's cabin step upgrade option.

Available for Cessna Citations ranging from the classic C500 to the latest CJ3+, SkyStep is the state of the art in providing easy cabin access to the Cessna Citation. Pilots and passengers alike will appreciate the extra stability of the third-generation SkyStep's secure, stable design.

SkyStep features:

- 3 equally spaced steps enhance ease of entry.
- Enclosed back & sides help prevent slips and improve passenger security.
- First step is closer to the ground. There's no need to bring a separate "1st step" in your baggage compartment.
- A gas cylinder helps smoothly deploy the step, reducing risk of damage to door sill or toes.
- Precision machined from tough aircraft aluminum for long life.
- Easy field installation, typically in less than 2 hours.
- Lifetime warranty for as long as you own your Citation.



Compare SkyStep to the factory replacement steps:

Description	factory replacement step*	Cessna composite step	SkyStep
Applications	Citation 500/501, 525	Citation 525B	Citation 500-series; 500 thru 560 and 525 series
Part Number	6519009-75	4717238-20 or -24	n/a
Installation	no interior modification	interior mod required	no interior modification
Price	\$15,899**	\$38,113 – \$49,137**	\$20,500.00

*Prices do not include installation. Installation is available - please inquire for details.
 *Cessna replacement step only - does not include ancillary parts required for installation.
 **Prices based on most recent published information.*

Prices subject to change without notice. Product application and pricing may vary based on aircraft specifications and configuration.

Available in mid-2023:
Citation Mustang SkyStep

Artist's rendering



New! SkyStep Cabin Step Upgrade for Citation Mustang

SkyWay is excited to introduce a brand new SkyStep designed and engineered specifically for the Citation C510 Mustang. This new design takes full advantage of all we've learned in SkyStep development, incorporating multiple design innovations. The lightweight

construction features side rails and steps precision machined from tough aircraft aluminum. The stylish compound curve SkyStep design also features an integrated LED light bar for each step, enhancing safety in low-light conditions.

SkyStep Cabin Step Upgrades

Description	Order #	Our Price
SkyStep — for Citation 500/501, 550-551, 560, 525, 525A, 525B	C500-0000	\$20,500.00
SkyStep — for Citation 510 Mustang (<i>available mid-2023: call for details</i>)	C510-0000	\$20,500.00
OPTIONAL UPGRADES		
LED Puddle Light — for Citation 500/501, 550-551, 560, 525, 525A, 525B	C500-0000	Call for Price
Custom Paint Color — Please specify paint MFG and color code	C500-0000	\$650.00
No Paint — primer color only	C500-0000	-\$500.00

Note: Lead time for custom paint colors is 3 to 4 weeks. Please contact us for more information.

Prices subject to change without notice. Product application and pricing may vary based on aircraft specifications and configuration.



Citation Extended-Width Door Modification

This extended-width door modification provides easy cabin access for large, bulky items without compromising the structural integrity of the Citation airframe. In fact, this modification has been tested to the maximum requirements of FAR Part 25 and has been proven through dozens of Citation installations. Since it uses the same reliable mechanical design of the original door, no specialized maintenance or tools are required.

The full 36 inch opening (the original Citation door

is only 23”) provides extra access capability for medical transport, palletized cargo, large aerial cameras, research equipment or other oversized cargo items. Since it has no effect on your existing seating arrangements, it is ideal for multiple-use aircraft — one day, you can host an in-flight business meeting; the next, you can scout locations using oversized camera equipment! This cargo door can be installed on any Citation from the Model 500 to the Model 560.

Description	Remarks	Installed Price
EXTENDED-WIDTH DOOR MODIFICATION - 36" wide door with additional structural stiffening. Modification includes all necessary changes to interior and door trim	Citation 500 / 501SP	\$450,000.00
	Citation 550 / 551SP	\$450,000.00
	Citation 560	\$450,000.00

Available from Avacquire, LLC

www.avacquire.com

9236 Legado Drive
 Windermere, FL 34786
 (210) 262-4000



Prices subject to change without notice. Product application and pricing may vary based on aircraft specifications and configuration.

Replacement Citation Door Hinge Assembly

Introducing a direct-fit replacement for the original Citation cabin door hinge. Precision machined from a single billet of 2024-T351 aluminum, this high-strength component is less prone to corrosion than the original cast aluminum door hinge.

SkyWay's hinge was originally designed to cope with the additional weight and angular stress of our 36" extended width Citation door modification. After many requests for a replacement part for regular door hinge repairs, this STC was 'spun off' from the original modification, allowing use for standard Citation doors.

The replacement hinge is applicable to all Citation 500, 501, 550, 551 and 560 models. The hinge is manufactured under PMA PQ0554SW and installed under STC SA4098NM (Cessna 500/550/560) and STC SA4099NM (Cessna 501/551).



Original hinge showing stress fracture and cracking, separating casting from door skin.

Description	Application	Order Number	Our Price
Replacement Door Hinge	Citation 500, 501, 550, 551, 560	call for details	\$8,222.00

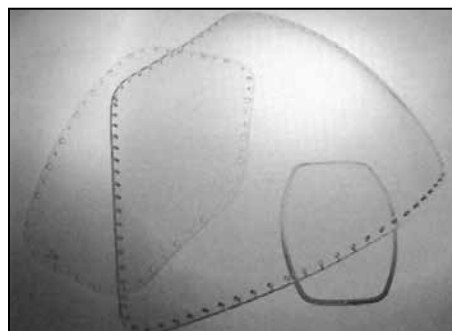
Replacement Windows

As your aircraft ages, your windows inevitably fall victim to erosion, scratches and nicks from exposure to the elements and, sometimes, careless passengers.

Choose SkyWay's professionals to install your windows, and we'll have you on your way with a minimum of downtime – without costing you an arm and a leg. Call your representative today for more information.

CITATION WINDOW REPLACEMENTS

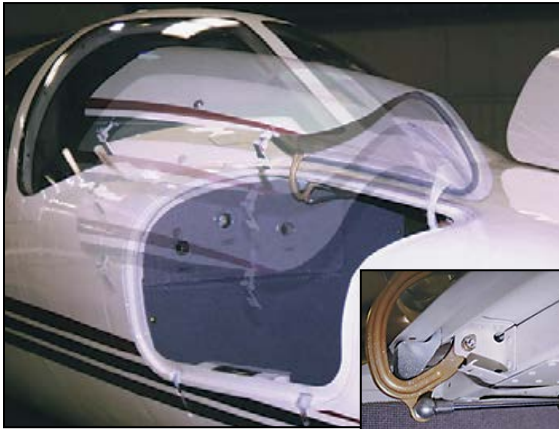
Pricing for Citation 500/501, 550/551, S550, 560 models. Window replacement is also available for 525, 650 and 510 series Citations. Please call for a price quote.



Description	Installed Price
Right Side Windshield	\$18,775.00
Left Side Windshield	\$18,775.00
Right Side Cockpit -Outer	\$10,784.25
Right Side Cockpit -Inner	\$7,704.80
Left Side Cockpit -Outer	\$12,675.15
Left Side Cockpit -Inner	\$7,704.80
Cabin Window	\$3,463.20

**Note: Prices do not include cabin interior removal.*

Prices subject to change without notice. Product application and pricing may vary based on aircraft specifications and configuration.



“Pneu-Lift™” Nose Baggage Door Openers

Eliminate bent or broken hardware due to inexperienced personnel — convert your nose baggage doors to SkyWay’s “Pneu-Lift™” system for faster, easier and hassle-free operation. The “Pneu-Lift™” system uses high-tech gas cylinder lifters to provide easy and safe access to the nose baggage compartment. Choose the complete easy-to-install kit or call us for more information about our installation service.



Quick Release Radome Modification

No more screwdriver scratches or expensive and easy-to-lose fasteners! Accent your aircraft’s appearance and improve maintenance access to the Radar/Avionics bay. Our Quick Release Radome Modification permits rapid 1-minute removal and installation and easy access to radar and avionics equipment, while providing secure, high-tech attachment and a smooth, clean appearance. Call us today for more information.



CITATION EXTERIOR MODIFICATIONS

Description	Application	Order No.	Install Man-Hours	Kit Price	Installed Price
“PNEU-LIFT™” NOSE BAGGAGE DOOR OPENERS — Automatic Nose Baggage Door Opening System. Gas cylinder lifters provide easy access to Nose Baggage Compartment.	Citation 500/501SP, 550, 551SP, S550, 560	SI 380-1	12 m/h	\$6,000.00	\$7,620.00
		Complete Kit for aircraft with existing lighting.	SI 380-2	24 m/h	\$6,500.00
Replacement Pneu-Lift Strut		SI380-110-21		\$495.00	n/a
RADOME MODIFICATION — Screw type Radome fasteners replaced with special bayonet guide and positive locking Quick Release Fasteners. Does not include paint.	Citation 500/501SP, 550, 551SP, S550, 560	SI 160	35 m/h	\$13,500.00	\$18,225.00

Prices subject to change without notice. Product application and pricing may vary based on aircraft specifications and configuration.

Citation Protective Mask Kit

The leading edges of your aircraft are subject to continual erosion during flight. Sand, insects and other particles gradually damage the surface, especially on radar-transparent fiberglass or Kevlar components like those used for the radome. The solution? This high quality protective mask for your aircraft's radome. These masks have been proven in years of service, and, once applied, are nearly invisible. Extensive testing has shown that they will last for years, never yellow and are easily installed in just minutes.

Kit includes easy-to-use instruction manual. An installation video is also available.



Above: Unretouched photo of eroded radome.



Left: Radome mask is virtually invisible

Description	Order Number	Kit Price	Installed Price
RADOME PROTECTIVE MASK – Citation straight wing. Installation requires 1 man-hour.	PM51	\$595.00	\$674.00
Comprehensive Installation Video	PM51-V	Free	Free



TAT probe cover



Static Wicks

EXTERIOR MODIFICATIONS & ACCESSORIES

Description	Application	Part No.	Price
TAT PROBE COVERS — Heavy duty nomex canvas covers protect delicate temperature probes from dust, insects and foreign object damage. Includes easy Velcro closure and bright red "Remove Before Flight" ribbon.	All Citations	FTC-102	\$126.86 ea
STATIC WICKS — high performance static dischargers for the Cessna Citation in either the brown factory original style (P/N 15330 - long & 15340 - short) or a new upgrade version* which is stronger, more streamlined and more efficient (P/N 16920 - long & 16930 - short). The Cessna Citation requires 14 long and 4 short static dischargers.	Citation 500/501SP, 550, 551SP, S550, 560	15330	\$137.00
		15340	\$135.00
		16920	\$78.00
		16930	\$68.00

* Note: SB23-15 must be completed in order to fit new upgrade static wicks (P/N 16920 & 16930).

Prices subject to change without notice. Product application and pricing may vary based on aircraft specifications and configuration.

10 Citation Upgrades

Exterior Modifications

Tires, Wheels & Brakes for Citation Aircraft

Keep your Citation's landing gear in tiptop condition with our complete selection of tires, wheels & brake upgrades and replacements. Whether you're overhauling your existing setup or upgrading to Cleveland or B. F. Goodrich systems, our experienced, certified technicians will treat your aircraft with the careful attention to detail that you deserve. Call today to schedule an appointment.



CLEVELAND WHEELS & BRAKES

Description	Application	Part #	Installed Price
WHEEL & BRAKE CONVERSION — Main Wheel & Brake.	Citation 500, 550	199-164	call for quote
NOSE WHEEL CONVERSION	Citation 500, 550, S550	199-137	call for quote

Note: Add core charge of \$1500.00 if old wheels & brakes are not turned in. Please allow 6 to 8 weeks lead time for conversions.

GOODYEAR BRAKE REPLACEMENT

Description	Application	Part #	Installed Price (ea)
Replace existing Goodyear brakes with overhauled units. Please add core charge of \$7500.00 per brake if removed brake pacs are not turned in.	LH Brake - Citation 500, 550	5001445-3	\$3,109.00
	RH Brake - Citation 500, 550	5001446-3	\$4,337.00

CITATION 500/501— B. F. GOODRICH WHEELS & BRAKES

Description	Application	Part #	Installed Price
WHEEL & BRAKE CONVERSION — to B. F. Goodrich wheels & brakes per Cessna SB 500-32-38.	without power assist brakes	SB500-32-38-0	call for quote
	with power assist brakes	SB500-32-38-1	call for quote

Description	Part #	Application	Installed Price (ea)
BRAKE REPLACEMENT — Replace existing B. F. Goodrich brakes with overhauled units. Please add core charge of \$14,000.00 per brake if removed brake pacs are not turned in. Pricing for either L or R side.	2-1528-6	Citation I & II with hydraulics	\$10,471.00
	2-1530-4	Citation 500/501 w/o hydraulics	\$10,302.00

GOODYEAR CITATION REPLACEMENT TIRES

Description	Application	Order Number	Our Price
Replacement Nose Wheel Tires. Fits Citation 500/501, 550/551, S550, 550 Bravo, 560 models	Citation Nose Wheel Tire - 210 MPH	184F10-2	\$935.00
	Citation Nose Wheel Tire - 190 MPH	184F08-1	\$1,029.00
Replacement Main Gear Tires <i>*Clearance price - limited to in-stock only.</i>	Citation I Main Gear Tire	220K08-3	\$1,313.00
	Citation II / S-II Main Gear (SN-627 up)	220K28-1	\$1,344.00
	Citation 550 Bravo / 560 Main Gear Tire	229K48-2	\$1,746.00
	Citation 525 Nose Gear Tire	184F68-1	\$182.24*
	Citation 525A Main Gear Tire-190 MPH	277K28-1	\$1,046.00
	Citation 525 Main Gear Tire - 190 MPH	277K08-1	\$1,090.00
	Citation 650 Main Gear Tire - 190 MPH	226K08-4	\$1,286.00
Citation 650 Main Gear Tire - 210 MPH	184F13-5	\$1,048.00	

Prices subject to change without notice. Product application and pricing may vary based on aircraft specifications and configuration.

SKYWAY

1-830-900-7032

AeroLED Replacement Lights

LED lighting technology is a significant upgrade from existing incandescent and halogen lights, providing much longer life (20,000 hours!), reduced power consumption and much greater shock and vibration tolerance. These lights feature tough, hard-coated clear polycarbonate lenses and state-of-the-art surface mount technology. AeroLED light replacements are compatible with existing lighting profiles and mounting, and are fully compliant with all FAR color requirements.



CITATION LED Replacement Lights

Description	Model No. / Application	AeroLED part no.	Our Price
Tail Position Lights	7101102 LED / Tail Light - Vertical Mount	11-1260-24	\$495.00 ea.
	7101103 LED / Tail Light - Horizontal Mount	11-1260-24 W/ KIT-0064	please call
Rudder Anti-Collision Light	9008813 LED / Red anti-Collision Light	n/a	please call
Wingtip Position Lights	7097501 LED / Red Position Light	n/a	please call
	7097502 LED / Green Position Light	n/a	please call

LANDING LIGHTS	Model Application	AeroLED part no.	Our Price
PAR 36 Replacement	550 Bravo SN: 550-801 AND UP. 560 Encore SN: 560-5039 THRU 560-0750. 560 Encore+ SN: 560-0751 THRU 560-5000. 650 (SN: 650-0001 AND ON INCORPORATING SB650-34-49.	01-1030-4596	\$650.00 ea.
PAR 46 Replacement	500, 550, S550, 560 (CIT V) SN: 560-0001 THRU 560-0259, 560 (ULTRA) 560-0260 THRU 560-0538. MODELS 525, 525A, 525B (SN: 525-0001 THRU 525-0679, 525-0681 THRU 525-0684, 525A-0001 THRU 525A-0416, 525A-0418 THRU 525A-0438, 525B-0001 THRU 525B-0262, 525B-0264 THRU 525B-0293. 650 (SN: 650-0001 AND ON)	01-2230-4580	\$850.00 ea.
PAR 64 Replacement	560XL (SN 5001 AND ON)	01-2250-4559	\$1,650.00 ea.

DE-ICE BOOTS for CITATION I & II

Description	Order #	Boots Only (ea)	Installed Price (ea)
LH, EAGLE Modified Citation 500/501 Aircraft	25S7D5059-11	call for quote	call for quote
RH, EAGLE Modified Citation 500/501 Aircraft	25S7D5059-12	\$4,190.00	\$10,265.00
LH Citation II	P25S-7D5059-09	\$5,696.00	\$11,771.00
RH Citation II	25S7D5059-10	\$5,052.00	\$11,127.00
STALL STRIPS — 2 required	3D2487	\$567.00	\$702.00
LH, LONGWING Modified Citation 500 Aircraft	25S7D5059-07	\$4,976.00	\$10,916.00
RH, LONGWING Modified Citation 500 Aircraft	25S7D5059-08	\$4,976.00	\$10,916.00
HORIZ STAB — RH and LH	25S7D5059-13	call for quote	call for quote
VERTICAL FIN	25S7D5059-05	\$2,497.00	\$6,007.00

Prices subject to change without notice. Product application and pricing may vary based on aircraft specifications and configuration.

Citation Main Ship Batteries



GILL LOW-MAINTENANCE BATTERY

- High Rate Discharge (in excess of 1450 AMPS).
- 70 AMP 30 minute emergency capacity.
- Excellent low-temperature performance — 445 CCA @ 0° F (-18° C) for 60 seconds.
- Robust TTP (through the partition) inter-cell connections increase reliability.
- Reinforced cast aluminum lid and heavy-duty integrated internal connector post.

HAWKER 43 AH LEAD-ACID BATTERY

- True no-maintenance battery.
 - Hot & cold performance exceeding any other aviation battery: -40°C to +75°C.
 - Epoxy-coated steel case with thermal sensor.
 - Superb deep-discharge recovery capability.
- Call for technical information and warranty details.

CITATION BATTERY CONVERSIONS

Description	Application	Order #	Installed Price
GILL G-6381ES SEALED BATTERY — This robust 24 volt, 43 Amp-Hr battery provides significant maintenance-cost savings and higher capacity than standard batteries. 80 lbs. 1-year warranty.	Citation 500 series	7638-44	\$3,325.00
HAWKER 43 Ah MAIN SHIP BATTERY — This 24 volt no-maintenance battery is specifically designed for Citation 500-series aircraft. 91 lbs. 24 mo. storage / 30 mo. installed warranty.	Citation 500 series	9750W0370-11	call for current price
BATTERY CONVERSION — Converts existing NiCAD battery to Lead-Acid battery for improved performance, utility and cost-effectiveness.	Citation 500/501SP, 550, 551SP, S550, 560	n/a	call for current price
CONCORDE RECOMBANT LEAD-ACID BATTERY — Converts existing NiCad battery to low maintenance sealed and STC'd lead-acid battery.	Citation 500 / 501SP	RG-380E/44	\$4,363.00

Adjustable Tail Stand

This sturdy steel tail stand provides stable and height-adjustable support for the Citation aircraft empennage and helps protect the tail section from damage during maintenance and/or repairs. The cushioned platform fits all straight wing Citation aircraft and is lightweight and compact for easy storage.



Description	Item Number	Our Price
Adjustable Tail Stand	SI1200-104	\$550.00

Prices subject to change without notice. Product application and pricing may vary based on aircraft specifications and configuration.



Cockpit Sun Shield Set

COCKPIT SUN SHADES

- Fully Retractable, FAA Approved Design
- Tailors to Citation Cockpit Windows
- Blocks 99% of UV Rays
- Cools the Cockpit with 92% Heat Rejection
- Prevents Damage to Avionics and Improves Visibility.

* Monorail extra. Please call for details.



Description	Applications	Order #	Kit Price
Citation Cockpit Heatshields — Interior Reflector Laminate - set of 5	Citation 500/501	C500-900	\$360.00
	Citation 550/551, S550	C550-900, S550-900	\$360.00
	Citation 560	C560E-900, C560-900	\$360.00
	Citation 525, 525A, 525B	CJ1-902	\$435.00
Citation Cockpit Heatshields — Interior Reflector Laminate - set of 4	Citation 510 Mustang	C510-900	\$365.00
Citation Cabin Window Heatshields — Interior Reflector Laminate - set of 6	Citation 510 Mustang	C510-910	\$315.00
Entrance & Exit Door Heatshields — Interior Reflector Laminate - set of 2	Citation 500/501	C500-910	\$155.00
	Citation 550/551, S550	C550-910, S550-910	\$155.00
	Citation 560	C560E-910, C560-910	\$155.00
Cockpit Sun Shield Set — windshield and side windows	Citation 500, 501, 550, 551, S550, 560	C-22	Call for Price

Please Note: Freight charges are not included.

Prices subject to change without notice. Product application and pricing may vary based on aircraft specifications and configuration.



Have your aircraft's N-number silkscreened onto your cover — call us for information and pricing.

CUSTOM CITATION PROTECTIVE COVERS

Top-quality fabric covers keep your Citation looking its best, and protect it from damage. Adjustable attachment straps feature non-metal Delrin™ buckles for rugged outdoor use without scratching. Windshield & Cockpit Covers are made of two-ply nylon/silver laminate, lowering interior temperatures as much as 25 degrees. Fuselage and Engine Covers are made of durable Cordura fabric. All covers include a handy duffel bag for stowage. Please call for more information about monogramming and color selection.

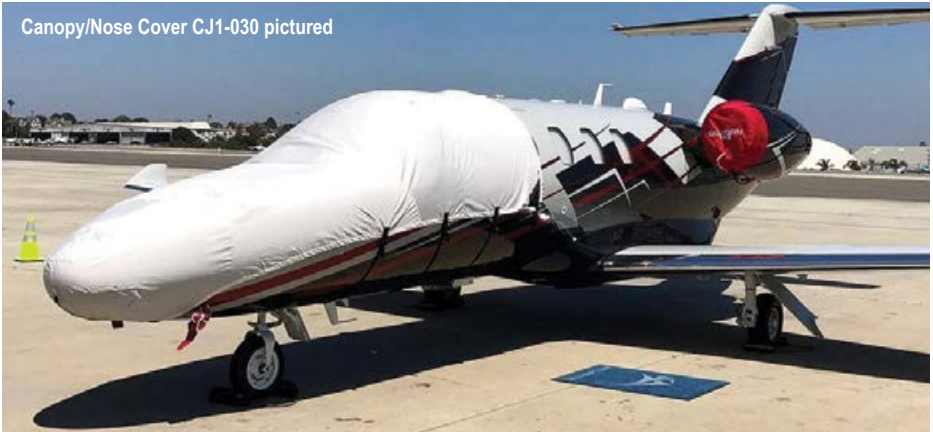
CITATION FABRIC AIRCRAFT COVERS

Description	Citation series:			Our Price
	500 / 501 Order #	550 / 551, S550 Order #	560 Order #	
Windshield Cover — Nylon/Silver Laminate	C500-000	C550-000	C560-000	\$660.00
Nose/Cockpit Cover — Nylon/Silver Laminate	C500-030	C550-030	C560-030	\$1,285.00
Forward Cabin/Nose Cover — Nylon/Silver Laminate	C500-040	C550-040	C560-040	\$1,310.00
Fuselage/Nose Cover — Back to support pylons	C500-045	C550-045	C560-045	\$2,540.00
Fuselage/Nose Cover — Back to dorsal /empennage	C500-050	C550-050	C560-050	\$4,165.00
Pitot Cover Set — Heat resistant	C500-201	C550-201	C560-201	\$200.00
Cockpit Heat Shield Set — Interior Reflector Laminate	n/a	C550-900	C560-900	\$360.00
Entrance & Exit Door Heat Shield Set — Reflective Laminate	n/a	C550-910	C560-910	\$155.00
Engine Covers — No TRs, Smooth Generator Inlet	C500-100	C550-100	C560-100	\$1,100.00
Engine Covers — No TRs, Protruding Generator Inlet	C500-101	C550-101	C560-101	\$1,100.00
Engine Covers — With TRs, Smooth Generator Inlet	C500-110	C550-110	C560-110	\$1,100.00
Engine Covers — With TRs, Protruding Generator Inlet	C500-111	C550-111	C560-111	\$1,100.00
TAT PROBE COVERS — Nomex covers protect delicate temperature probes from dust and damage. Includes Velcro closure and bright red "Remove Before Flight" ribbon. (not pictured)				\$126.86 (ea)

Note: Lead time for custom covers is 2 to 3 weeks. Freight charges not included.

Prices subject to change without notice. Product application and pricing may vary based on aircraft specifications and configuration.

Canopy/Nose Cover CJ1-030 pictured



CITATION FABRIC AIRCRAFT COVERS

Description	Citation series:			Our Price
	525 & M2 Order #	525A Order #	525B Order #	
Cockpit Cover — Nylon/Silver Laminate	CJ1-000	CJ2-000	CJ3-000	\$660.00
Canopy Cover — Nylon/Silver, covers all windows	CJ1-020	CJ2-020	CJ3-020	\$1,250.00
Cockpit/Nose Cover — Nylon/Silver Laminate	CJ1-030	CJ2-030	CJ3-030	\$1,285.00
Cockpit/Nose Cover — Nylon/Silver, covers all windows	CJ1-035	CJ2-035	CJ3-035	\$1,900.00
Pitot Cover Set — Heat resistant	CJ1-201	CJ2-201	CJ3-201	\$200.00
Cockpit Heat Shield Set — Interior Reflector Laminate	CJ1-900	CJ2-900	CJ3-900	\$365.00
Cockpit Heat Shield Set — includes entrance door	CJ1-902	CJ2-902	CJ3-902	\$435.00
Engine Covers & Exhaust Plugs — Incl. Intercooler Plugs	CJ1-100	CJ2-100	CJ3-100	\$1,115.00
Engine Inlet Covers — w/Small Pylon Plugs	CJ1-105	CJ2-105	CJ3-105	\$750.00
Engine Nacelle Covers — fully enclosed	CJ1-113	CJ2-113	CJ3-113	\$1,290.00
TAT PROBE COVERS — Nomex covers protect delicate temperature probes from dust and damage. Includes Velcro closure and bright red "Remove Before Flight" ribbon. (not pictured)				\$126.86 (ea)

Note: Lead time for custom covers is 2 to 3 weeks. Freight charges not included.

Description	Citation series:		Our Price
	510 Mustang Order #		
Cockpit Cover — Nylon/Silver Laminate	C510-000		\$660.00
Cockpit Cover — Nylon/Silver Laminate - extends to cover door	C510-005		\$710.00
Cockpit/Nose Cover — Nylon/Silver Laminate - extends to cover door	C510-015		\$1,245.00
Canopy Cover — Nylon/Silver Laminate	C510-020		\$1,450.00
Canopy/Nose Cover — Nylon/Silver Laminate	C510-025		\$1,935.00
Pitot Cover Set — Heat resistant	C510-201		\$200.00
Engine Covers & Exhaust Plugs — Includes Intercooler Plugs	C510-100		\$1,115.00
Engine Inlet Covers	C510-105		\$535.00
Engine Inlet Plugs — includes intercooler intake & exhaust and gen. plugs	C510-115		\$960.00
Engine Nacelle Cover — fully enclosed	C510-140		\$1,515.00
TAT PROBE COVERS — Nomex covers protect delicate temperature probes from dust and damage. Includes Velcro closure and bright red "Remove Before Flight" ribbon. (not pictured)			\$126.86 (ea)

Note: Lead time for custom covers is 2 to 3 weeks. Freight charges not included.

Prices subject to change without notice. Product application and pricing may vary based on aircraft specifications and configuration.



Glareshield - Annunciator Panel Modification

Do you want to take advantage of the latest touch-screen avionics but just don't have the panel space? Gain additional utility from your Citation's glareshield and add space for upgraded avionics. This attractive and functional Glareshield/Annunciator Panel modification not only frees up valuable panel real estate, but also improves situational awareness by putting vital annunciator

information right in your line of sight. Plus, our in-house waterjet machining technology can create perfect-fit replacement segments for your panel. The glareshield modification includes black Ultratech covering — other covering options are available to match your existing interior — call us today for details.

Glareshield - Annunciator Panel Upgrade	OTC Price*	Installed Price
Citation 500, 501, 550, 551, S550 models - includes black Ultratech covering.	\$12,100.00	\$12,535.00

*Over-the-counter price is applicable if customer ships glareshield. Shipping charges not included. Customer must have signed work agreement before shipping glareshield to SkyWay. Please call your sales representative for details.



Customized Throttle Knobs

Lightweight machined aluminum knobs are a flashy and functional addition to your cockpit. Engraved with Stallion, Super II or Super S-II logo, they are available in a variety of vivid anodized color finishes. They can also be customized with your aircraft registration number or company logo. Sold as a pair. Please call today for more details.

Custom Throttle Knobs	Our Price
Set of two knobs - please specify color and logo when ordering. *For non-T/R equipped aircraft only.	\$1,300.00 pair

Prices subject to change without notice. Product application and pricing may vary based on aircraft specifications and configuration.

Artex 406 MHz ELT

Early in 2009, U. S. emergency distress satellites ceased monitoring the older 121.5 MHz emergency frequency band in favor of the more accurate 406 MHz standard. Although 406 MHz ELT's are, as of this writing, not yet legally required in the United States, many countries, including Canada, Mexico and the European Union are implementing a 406 MHz standard.

The SI440 kit allows Artex C406 (406 MHz) Emergency Locator Transmitter installation on Cessna Citation Models 500, 501, 550, 551, S550 and 560 (excluding XL). This Supplemental Type Certificate (STC ST09718AC) provides a cost-effective solution for updating Citation emergency transmitters to current standards.

The Artex C406 provides an integrated ELT to Navigation interface and transmits latitude and longitude position information with an accuracy of 100 meters. The unit operates on 121.5, 243 and 406 MHz frequencies



In the event of a downed aircraft, the 406 MHz ELT broadcasts a distress call with aircraft identifier and GPS location data to orbiting COSPAS/SARSAT satellites. The satellites continuously monitor the 406 MHz frequency band - even in remote locations. Older 121.5 / 243 MHz standard frequencies are no longer monitored by satellite.

and features a 5-year battery life. Certifications include TSO C126 and ETSO 2C126 and the unit is approved by COSPAS/SARSAT and Transport & Industry Canada.

Artex SI440 406 MHz Emergency Locator Transmitter

Description		Kit Price
SI440-100-1 Basic C406 ELT system	Without NAV Interface	\$10,995.00
SI440-100-2 Extended C406 ELT system	GPS Broadcast with NAV Interface to Flight Director	\$11,895.00
INSTALLATION LABOR	If aircraft has existing ELT / wiring	Add \$2,900.00
	If aircraft does NOT have existing ELT / wiring	Add \$7,250.00

EROS Crew Oxygen Masks and Accessories

The EROS Classic MC series is the benchmark for integrated cockpit crew protection, providing unmatched smoke and hypoxia protection with secure fitting hypoallergenic seals. Regulator features automatic and manual overpressure and simple no-guess mixture selection. Easy one-handed extraction and inflation in less than two seconds. The efficient, ergonomically designed stowage cups can be easily integrated into the cockpit near the main flight controls for quick accessibility. Installation time: 8 hours.



SIERRA EROS MASKS and ACCESSORIES

Description	Application	Order Number	Kit Price	Installed Price
EROS MC-10 Classic Oxygen Mask	All Citation models	MC-10-15-109 or 9914067-41	\$5,537.66	\$6,618.00
EROS MXP210 anti-scratch polycarbonate goggles (not pictured)		MXP-210-00	\$655.41	n/a
EROS MXP105 lightweight stowage box with fasteners (not pictured)		MXP-105	\$258.43	n/a

Prices subject to change without notice. Product application and pricing may vary based on aircraft specifications and configuration.



Citation 510 Mustang Inspection Services

Inspection	Description	Time Interval	Our price
Doc 01	1A - Evap Coil, FADEC Valves, SWAAT, Aileron	every 450 hours	\$1,356.98
Doc 02	2A - Landing Gear Functional Checks	every 900 hours	\$814.19
Doc 03	3A - Fuel Filter Bypass Circuit Checks	every 1,350 hours	\$677.75
Doc 04	4A - Position/Anticollision Lighting Checks	every 1,800 hours	\$67.48
Doc 05	7A - Ext Power Relay Check	every 3,150 hours	\$67.48
Doc 06	1C - Emergency Equip, Gear Wells, Aft Spar	every 12 months	\$1,491.94
Doc 07	2C - Cockpit Windshield inspect	every 24 mos.	\$134.96
Doc 10	5C - Engine Fire Bottles Hydrostatic Test	every 60 mos.	\$814.19
Doc 11	6C - Zonal Inspections, Fire Extinguisher	every 72 mos.	\$3,391.70
Doc 12	12C - Fire Extinguisher Hydrostatic Test	every 144 mos.	\$67.48
Doc 13	1A/1C - Autopilot Servo, Battery, Vapor Cycle	every 450 hrs / 12 mos.	\$5,831.33
Doc 14	2A/1C - Flap System, Fuel Filter Replace	every 900 hrs / 12 mos.	\$610.27
Doc 15	3A/2C - De-Ice System Test	every 1,350 hrs / 24 mos.	\$203.91
Doc 16	3A/3C - Engine Fire, Flight Controls, Landing Gear Inspection	every 1,350 hrs / 36 mos.	\$7,458.23
Doc 17	4A/3C - Wing Zonal Inspections	every 1,800 hrs / 36 mos.	\$1,491.94
Doc 18	5A/3C - Fuel Storage System, O2 Masks	every 2,250 hrs / 36 mos.	\$2,306.12
Doc 20	6A/4C - Seat Restraint Systems	every 2,700 hrs / 48 mos.	\$610.27
Doc 21	req. by 14 CFR 91.207 (no grace period)	every 12 mos.	\$475.31
Doc 22	req. by 14 CFR 91.411, 14 CFR 91.413 & RVSM	every 24 mos.	\$1,695.85
Doc 24	per maintenance manual	1st 300 hrs / 6 mos. + ea. 200 hrs / 3mos. thereafter	\$542.79
Doc 28	Wheel special detail inspection per mfg.	per Goodrich CMM	Call for price
Doc 30	4A/4C - Pressurization System Check	every 1,800 hrs / 48 mos.	\$1,355.51
Doc 31	FADEC time limited dispatch (no grace period)	every 450 hrs	\$134.96
Doc 32	Landing Gear Corrosion Inspection	1,800 Indngs/72 mos.	\$9,491.49
Doc 34	Teledyne Gill (S1473 or S4324-1) Lead-Acid Battery Functional Check (Capacity Check)	900 hrs / 12 months, every 450 hrs / 6 mos thereafter	\$540.00
Doc 35	Visual Corrosion Inspection	every 6 mos	Call for price

Flat rate prices include inspection labor. State and local taxes, discrepancy labor, parts, materials and freight are billed extra. NDT is not included except where noted. Call us for pricing on non-listed inspections.

Prices subject to change without notice. Product application and pricing may vary based on aircraft specifications and configuration.

Citation 510 Mustang Inspection Services

Inspection	Description	Time Interval	Our price
Doc 36	Pitot-Static System Functional Check (Airplanes with Air Data Computer P/N 011-01110-00 only)	12 months after installation	Call for price
Doc 37	Skin Joint Special Detailed Inspection (Eddy Current)	every 7200 hours	Call for price
Doc 38	Concorde (RG-390E) Lead-Acid Battery Check	every 12 months	\$540.00
Doc MA	Emergency brake functional check, CH 4	every 500 hours	\$1,016.63
Doc MB	OH hydraulic power pack, CH 4, func. Check landing gear/uplock switches	every 950 hours	\$2,576.05
Doc MC	check engine isolators, CH4, no grace period	every 3,500 hours	\$542.79
Doc MD	check elevator, rudder, aileron hinges, CH4	every 12 mos.	\$134.96
Doc ME	functional check O ₂ system, CH4, no grace period	every 1,400 hrs/36 mos.	\$677.75
Doc MF	Special Detailed Inspection	12,000 hours and every 4000 hours thereafter	Call for price
Doc MG	Environmental Corrosion Exterior (All Pressure Vessel Skins and Splices Detailed) Inspection	5000 hours and every 2500 hours thereafter	Call for price
Doc MH	Windshield Lower Sill Special Detailed Inspection	8250 hours and every 3400 hours thereafter	Call for price

Flat rate prices include inspection labor. State and local taxes, discrepancy labor, parts, materials and freight are billed extra. NDT is not included except where noted. Call us for pricing on non-listed inspections.



**Save money on maintenance, insurance, taxes and more!
Ask about our FlightTime aircraft management services.**

**Call 830-900-7032 ext 306 or visit
www.flighttime.com for more details!**

Prices subject to change without notice. Product application and pricing may vary based on aircraft specifications and configuration.

WWW.SkyWay-MRO.COM



Citation 500/501SP Phase Inspection Services

Inspection	Description	Time Interval	Our Price
Phase B	General Airframe & Engine	150 hrs.	\$1,210.00
Phase 1	Nose, Cockpit, Interior	300 hrs / 24 mo.	\$2,825.00
Phase 2	Wings, Gear, Empennage	300 hrs / 24 mo.	\$5,738.00
Phase 3	Tailcone	300 hrs / 24 mo.	\$1,401.00
Phase 4	Powerplants (both)	300 hrs / 24 mo.	\$3,641.00
Phase 4 A/F	Airframe Only	300 hrs / 24 mo.	\$1,280.00
FJ44-2A Check 1 (both engines)		150 hrs (non-TAP)	\$1,181.00
FJ44-2A Check 1 (both engines)		300 hrs (TAP)	\$1,181.00
FJ44-2A Check 2 (both engines)		300 hrs (non-TAP)	\$1,280.00
FJ44-2A Check 2 (both engines)		600 hrs (TAP)	\$1,280.00
Phase 5	Complete Inspection & 1200 hr. — w/o Phase 49	1200 hrs / 36 mo.	\$24,664.00
Phase 1 thru 5 — w/o Phase 49			\$30,825.00
Phase 6	Airframe Exterior Check	14 days	\$985.00
Phase 7	Drag Chute	90 days	\$394.00
Phase 10 - NiCAD	Battery Deep Cycle	100 hrs	\$639.00
Phase 11	Stick Shaker (Netherlands)	200 hrs	\$198.00
Phase 12	ACM, Spar & Brakes	600 hrs	\$624.00
Phase 13	Nicad S/B Gyro Battery	100 hrs / 3 mo.	\$394.00
Phase 14	Lead Acid S/B Gyro	600 hrs / 3 - 6 mo.	\$315.00
Phase 15	Empennage Structure: Crack Inspection — Tail	10K hrs, 15K hrs, then ea 1K	\$12,501.00
Phase 16	Cabin Door and Engine Mount Structure	10K hrs, 15K hrs	\$1,476.00
Phase 17	Crack Inspection — Cabin Structure	10,000 hrs	\$4,529.00
Phase 18	Emergency Equipment	Every Year	\$640.00
Phase 20	A/S, Alt, ADC & Static, FAR 91.411A/S	Every 2 years	\$1,280.00
Phase 20	Phs. 20 above, with RVSM	Every 2 years	\$1,379.00
Phase 21	CVR & Locator Beacon	Every 2 years	\$591.00
RVSM Yearly Inspection		Every year	\$1,575.00
Phase 22	Oxygen & Nitrogen Hydro	Every 3 years	\$1,083.00
Phase 23	Emergency Bottles Hydro (NDT extra)	Every 5 years	\$1,083.00
Phase 24	Pressure Bulkheads & Spar C/T	10K hrs, then ea. 3K hrs	\$34,090.00

Flat rate prices include inspection labor. State and local taxes, discrepancy labor, parts, materials and freight are billed extra. NDT is not included except where noted.

Prices subject to change without notice. Product application and pricing may vary based on aircraft specifications and configuration.

Citation 500/501SP Phase Inspection Services

Inspection	Description	Time Interval	Our Price
Phase 25	Pratt & Whitney Hot Section Inspection	per P&W Manual	\$8,466.00
Phase 26	Oxy Cylinder Hydro Test	10 yr. / 5 yrs.	\$1,083.00
Phase 34	Portable Fire Extinguishers	every 6 mo.	\$115.00
Phase 37	Windows, Doors, Wing & Horizontal Stabilizer	5000 hrs	\$6,734.00 NDT included
Phase 39	Camera Pod & Navigation Sight Structure	4500 hrs, then ea. Phase 5	\$519.00
Phase 41	Horizontal X-Ray	3,700 hrs, then ea. 1,200 hrs	\$2,281.00 NDT included
Phase 47	Cockpit & Cabin Halon FE Hydro	Every 12 years	\$115.00
Phase 48	Cockpit & Cabin Halon FE Inspection	Every 72 mo.	\$115.00
Phase 49	Skin Seam & Windshield / Window Inspection	1200 hrs / 36 mo.	\$2,448.00 NDT Included
Phase 50	Wing Attach Inspection: 10K hr/15yr Spar Carrythru	1200 hrs / 36 mo.	\$2,514.00 NDT included
Phase 51	Foam Voids, SL500-28-10 (Block reinstall extra)	First 10,000 hrs/10 yr, then ea. 5 yr.	\$14,630.00
Phase 52	Fwd & Aft Pressure Bulkhead	First 5000 hrs, then ea. 2000 hrs.	\$6,694.00 NDT included
Phase 53	Emer. Locator Transmitter	Every 12 mos.	\$198.00
Phase 54	Battery Deep Cycle, Lead-Acid	100 hrs	\$639.00
Phase 55	Thrust Reverser Pivot Point lube	600 hrs	Call for Price
Phase MA	Nose LG Fork -1, -3	12,000 Lndgs, then ea. 1000	\$164.00 (NDT extra)
Phase MD	MLG Side Brace	Every 5000 landings	\$1,394.00 NDT Included
Phase MF	BF Goodrich Brake Inspection - no TRs	1st 224 Indgs, then ea. 200 Indgs, remove at 749 Indgs	\$938.00
Phase MG	BF Goodrich Brake Inspection - w/ TRs	1st 425 Indgs, remove at 749 Indgs	\$938.00
Phase MH	Vapor cycle system hour meter	Every 300 hrs	Call for Price
Sierra Eagle 2,500 Hour Inspection		Every 2,500 hrs	\$4,725.00
Engine Change			\$6,891.00
Certificate of Airworthiness			\$2,756.00
Prepurchase Evaluation			\$5,638.00
Aircraft Re-weigh			\$1,280.00

Flat rate prices include inspection labor. State and local taxes, discrepancy labor, parts, materials and freight are billed extra. NDT is not included except where noted.

See page 37 for Sierra-modified Citation manuals and supplements

Prices subject to change without notice. Product application and pricing may vary based on aircraft specifications and configuration.



Citation 550/551 Phase Inspection Services

Inspection	Description	Time Interval	Our price
Phase B	General Airframe & Engine	150 hrs.	\$1,210.00
Phase 1	Nose, Cockpit, Interior	300 hrs / 24 mo.	\$2,825.00
Phase 2	Wings, Gear, Empennage	300 hrs / 24 mo.	\$5,738.00
Phase 3	Tailcone	300 hrs / 24 mo.	\$1,401.00
Phase 4	Airframe and Powerplants (both)	300 hrs / 24 mo.	\$3,641.00
Phase 4 A/F	Airframe Only	300 hrs / 24 mo.	\$1,280.00
FJ44-3A Check 1 (both engines)		150 hrs (non-TAP)	\$1,181.00
FJ44-3A Check 1 (both engines)		300 hrs (TAP)	\$1,181.00
FJ44-3A Check 2 (both engines)		300 hrs (non-TAP)	\$1,280.00
FJ44-3A Check 2 (both engines)		600 hrs (TAP)	\$1,280.00
Phase 5	Complete Inspection & 1200 hr.	1200 hrs / 36 mo.	\$26,921.00
Phase 1 thru 5	Complete Inspection		\$34,584.00
Phase 6	Airframe Exterior Check	14 days	\$886.00
Phase 7	Drag Chute	90 days	\$198.00
Phase 10	FADEC relay check	100 hrs	Call for Price
Phase 11	Rudder Servo & Cables	200 hrs	\$640.00
Phase 12	ACM, Spar & T/R	600 hrs	\$426.00
Phase 13	Nicad S/B Gyro Battery	100 hrs / 3 mo.	\$321.00
Phase 14	Crack Inspection — Structures	10K hrs, then ea. 3K hrs	\$20,869.00 (NDT Included)
Phase 15	Empennage Structure: Crack Inspection — Tail, Horizontal	10K hrs, 15K hrs, then ea 1K	\$8,751.00 (NDT Included)
Phase 16	Crack Inspection — Door & Pylon	10K hrs, 15K hrs	\$1,476.00 (NDT Included)
Phase 17	Crack Inspection — Cabin Structure	10,000 hrs	\$4,529.00 (NDT Included)
Phase 18	Emergency Equipment	Every Year	\$1,773.00
Phase 19	Vertical inspection	10,000 hrs, then ea. 2500	\$3,750.00 (NDT Included)
Phase 20	A/S, Alt, ADC & Static with RVSM	Every 2 years	\$1,379.00
Phase 20	Phase 20 without RVSM	Every 2 years	\$1,280.00
RVSM Yearly Inspection		Every year	\$1,674.00
Phase 21	Transponder & CVR Beacon	Every 2 years	\$460.00
Phase 22	Oxygen Hydro (NDT extra)	Every 3 years	\$985.00

Flat rate prices include inspection labor. State and local taxes, discrepancy labor, parts, materials and freight are billed extra. NDT is not included except where noted.

Prices subject to change without notice. Product application and pricing may vary based on aircraft specifications and configuration.

Citation 550/551 Phase Inspection Services

Inspection	Description	Time Interval	Our price
Phase 23	Emergency Bottles Hydro	Every 5 years	\$985.00
Phase 25	Hot Section Inspections	per P&W Manual	\$8,269.00
Phase 26	Cargo Door Pin Latch Inspection	2400 hours	T & M
Phase 27	Cargo Door Frame Inspection	3600 hours	T & M
Phase 34	Portable Fire Extinguishers	every 6 mo.	\$99.00
Phase 35	Standby Gyro Battery Pack	3 to 6 mo.	\$321.00
Phase 37	Windows, Doors & Stabs (NDT extra)	5000 hrs	\$6,734.00 (NDT Included)
Phase 39	Cargo Door & Camera Pod	4500 hrs, then ea. Phase 5	\$618.00
Phase 41	Horizontal X-Ray	3,700 hrs, then ea. 1,200 hrs	\$2,395.00 NDT included
Phase 47	Cockpit & Cabin Halon FE Hydro	Every 12 years	\$99.00
Phase 48	Cockpit & Cabin Halon FE Inspection	Every 6 years	\$99.00
Phase 49	Skin Joint & Doubler Inspection	1200 hrs / 36 mo.	\$2,448.00 (NDT Included)
Phase 50	10K hr/15yr Spar Carrythru	1200 hrs / 36 mo.	\$2,514.00 (NDT Included)
Phase 51	Fwd & Aft Pressure Bulkhead	1st 5000 hours, then ea. 2000	\$6,694.00 (NDT Included)
Phase 53	Copilot's Side Window Insp.	every 50 landings	\$188.00
Phase 55	Emer. Locator Transmitter	Every 12 mos.	\$198.00
Phase 56	Lead-Acid Battery Capacity	per Battery Manual	\$514.00
Phase 57	Copilot's Side Window Insp.	150 hours after installation	\$188.00
Phase MA	BF Goodrich Brakes - no TRs	1st 224 Indgs, the ea. 200 Indgs, remove at 749 Indgs	T & M
Phase MB	BF Goodrich Brakes - w/ TRs	1st 425 Indgs, remove at 749 Indgs	T & M
Phase MC	Nose LG Fork - 1, - 3 (SN -0491, -0492)	3400 Indgs, then ea. 1000	\$188.00
Phase MD	Nose LG Fork -1, -3 (SN -002 to -0626, except -0491 and -0492)	Every 5000 landings	\$188.00
Phase ME	Nose LG Fork -1, -3 (SN -0627 and up)	3400 Indgs, then ea 1000	T & M
Phase MF	Vapor cycle system hour meter	300 hrs	Call for Price
Engine Change			\$6,891.00
Certificate of Airworthiness			\$2,756.00
Prepurchase Evaluation			\$5,611.00
Aircraft Re-weigh			\$1,280.00

Flat rate prices include inspection labor. State and local taxes, discrepancy labor, parts, materials and freight are billed extra. NDT is not included except where noted.

See page 37 for Sierra-modified Citation manuals and supplements

Prices subject to change without notice. Product application and pricing may vary based on aircraft specifications and configuration.



Citation S550 Phase Inspection Services

Inspection	Description	Time Interval	Our price
Phase B	General Airframe & Engine	150 hrs.	\$1,210.00
Phase 1	Nose, Cockpit, Interior	300 hrs / 24 mo.	\$2,825.00
Phase 2	Wings, Gear, Empennage	300 hrs / 24 mo.	\$5,738.00
Phase 3	Tailcone	300 hrs / 24 mo.	\$1,401.00
Phase 4	Airframe and Powerplants (both)	300 hrs / 24 mo.	\$3,641.00
Phase 4 A/F	Airframe Only	300 hrs / 24 mo.	\$1,280.00
FJ44-3A Check 1 (both engines)		150 hrs (non-TAP)	\$1,181.00
FJ44-3A Check 1 (both engines)		300 hrs (TAP)	\$1,181.00
FJ44-3A Check 2 (both engines)		300 hrs (non-TAP)	\$1,280.00
FJ44-3A Check 2 (both engines)		600 hrs (TAP)	\$1,280.00
Phase 5	Complete Inspection & 1200 hr.	1200 hrs / 36 mo.	\$28,975.00
Phase 1 thru 5		Complete Inspection (w/o Phase 49)	\$35,136.00
Phase 6	Corrosion	14 days	\$886.00
Phase 8	Portable Fire Extinguisher	6 mo.	\$99.00
Phase 11	Standby Gyro Battery Pack	3 to 6 mo.	\$325.00
Phase 12	Cargo Door / Frame Inspection	3600 hours	T & M
Phase 13	Window Structure/Horiz Stab.	5000 hrs	\$7,97400
Phase 14	Fuselage/Wing Structure	10K, then 3000 hrs thereafter	\$20,869.00 (NDT Included)
Phase 15	Crack Inspection — Empennage/Tail	10K hrs, 15K hrs, then ea 1K	\$12,500.00 (NDT Included)
Phase 16	Crack Inspection — Door & Pylon	10K hrs, 15K hrs	\$1,476.00 (NDT Included)
Phase 17	Crack Inspection — Cabin Structure	10,000 hrs	\$4,529.00 (NDT Included)
Phase 18	Emergency Equipment	Every Year	\$1,969.00
Phase 20	A/S, Alt, ADC & Static with RVSM	Every 2 years	\$1,379.00

Flat rate prices include inspection labor. State and local taxes, discrepancy labor, parts, materials and freight are billed extra. NDT is not included except where noted.

Prices subject to change without notice. Product application and pricing may vary based on aircraft specifications and configuration.

Citation S550 Phase Inspection Services

Inspection	Description	Time Interval	Our price
Phase 20	Phase 20 w/o RVSM	Every 2 years	\$1,280.00
RVSM Yearly Inspection			\$1,575.00
Phase 21	Transponder & CVR Beacon	Every 2 years	\$539.00
Phase 22	Oxygen & Nitrogen Hydro	Every 3 years	\$985.00
Phase 23	Emergency Bottles Hydro	Every 5 years	\$985.00
Hot Section Inspections			per P&W Manual \$8,269.00
Phase 26	TKS Strainers	3000 hrs / 24 mo.	\$525.00
Phase 27	Battery Recondition - NiCad	100 hrs	\$618.00
Phase 30	Hamilton Standard ACM Oil Change	600 hrs	\$99.00
Phase 31	Flap Bell Crank Mounts	4000 landings	\$231.00
Phase 32	Aileron Drive Bracket	15,000 landings / 7500 landings thereafter	\$1,476.00
Phase 33	Aileron Yokes Inspection	15,000 landings / 7500 landings thereafter	\$1,820.00
Phase 39	Camera Pod & Nav. Sight Structure	4500 hrs, then 8100, then 450 thereafter	\$623.00
Phase 43	Nose Gear Fork, -2	10,000 landings / 1000 landings thereafter	\$198.00
Phase 47	Cockpit & Cabin Halon FE Hydro	Every 12 years	\$99.00 (NDT not incl.)
Phase 48	Cockpit & Cabin Halon FE Inspection	Every 72 mo.	\$99.00 (NDT not incl.)
Phase 49	Skin Joint & Doubler Inspection	1200 hrs / 36 mo.	\$2,448.00 NDT Incl.
Phase 50	10K hr/15yr Spar Carrythru inspection	1200 hrs / 36 mo.	\$2,514.00 NDT Incl.
Phase 51	O2 Cyl. Hydrostatic Test	5 years	\$514.00 NDT Incl.
Phase 52	ELT Inspection	12 mo.	\$198.00
Phase 53	Wing L/E	2400 hrs / 72 mo.	\$14,375.00
Phase 54	I/B Lower Wing Spar	13,200 Indgs, 1200 Indgs thereafter	T & M
Phase 55	O/B Lower Wing Spar	15,600 Indgs, 1200 Indgs thereafter	T & M
Phase 56	Wing Spar Cap inspection	15,600 Indgs, 1200 Indgs thereafter	T & M
Phase 57	Copilot Side Window inspection	150 hours after install	\$188.00
Phase MA	Vapor cycle system hour meter	300 hrs	Call for Price
Phase MB	Nose Fork Inspection (5542300-2)	10,000 landings, then ea 1,000 landings	Call for Price
Engine Change			\$6,891.00
Certificate of Airworthiness			\$2,756.00
Prepurchase Evaluation			\$5,611.00
Aircraft Re-weigh			\$1,280.00

Flat rate prices include inspection labor. State and local taxes, discrepancy labor, parts, materials and freight are billed extra. NDT is not included except where noted.

See page 37 for Sierra-modified Citation manuals and supplements

Prices subject to change without notice. Product application and pricing may vary based on aircraft specifications and configuration.

WWW.SkyWay-MRO.COM



Citation 560 Phase Inspection Services

Inspection	Description	Time Interval	Our price
Phase B	General Airframe & Engine	150 hours after Phase 1-4	\$655.00
Phase 1	Nose, Cockpit, Interior	300 hrs / 24 mo.	\$2,543.00
Phase 2	Landing Gear, Empennage, Powerplants (both)	300 hrs / 24 mo.	\$5,164.00
Phase 3	Tailcone, Door Seal	300 hrs / 24 mo.	\$1,261.00
Phase 4	Airframe & Powerplants	300 hrs / 24 mo.	\$3,280.00
Phase 5	Complete Inspection	1200 hrs /36 mo.	\$29,686.00
Phase 1 thru 5	Complete Inspection		\$36,618.00
Phase 6	Airframe Exterior	every 14 days	\$935.00
Phase 7	Engine Oil Chip Detectors	every 50 hrs	\$188.00
Phase 8	I/B Wing Deice Boot	every 6 mo.	\$188.00
Phase 11	Standby Gyro Battery Pack	every 6 mo.	\$311.00
Phase 13	Cabin Door Locking Pins	5000 hours	\$500.00
Phase 14	Wing Structure	12,000 hrs, then 3,000 hrs thereafter	\$5,144.00
Phase 15	Crack Inspection — Tail	10,000 hrs, then 4,000 hrs thereafter	\$1,216.00
Phase 16	Engine Mount	10K hrs, 15K hrs, 3,000 hrs thereafter	\$1,403.00
Phase 17	Cabin Structure	10,000 hrs	\$4,863.00
Phase 18	Standby batt gyro & safety equip.	Every Year	\$1,776.00
Phase 20	RVSM, 2 Yr. - FAR 91.411	Every 2 years	\$1,309.00
Phase 20	non-RVSM, 2 Yr. - FAR 91.411	Every 2 years	\$1,216.00
Phase 21	CVR, FDR Operational Tests	Every 2 years	\$1,229.00
Phase 22	Oxygen Hydro (NDT extra)	Every 3 years	\$985.00
Phase 23	Emergency Bottles Hydro	Every 5 years	\$985.00
Hot Section Inspections		P&W manual	\$8,269.00
Phase 26	Ni-CAD Battery Deep Cycle	100 hrs	\$514.00

Flat rate prices include inspection labor. State and local taxes, discrepancy labor, parts, materials and freight are billed extra.
 *NDT is not included except where noted.

Prices subject to change without notice. Product application and pricing may vary based on aircraft specifications and configuration.

Citation 560 Phase Inspection Services

Inspection	Description	Time Interval	Our price
Phase 30	Refrigeration Unit Oil	600 hrs	\$188.00
Phase 32	Aileron Drive	15,000 landings, then ea 7500	\$1,403.00
Phase 33	Aileron Yoke	15,000 landings, then ea 7500	\$1,403.00
Phase 34	Fwd & Aft Bulkhd + Skin	every 6725 hrs	\$8,043.00
Phase 35	Fuselage Skin (NDT extra)	3600 hrs	\$2,058.00
Phase 47	Cockpit & Cabin Halon FE	Every 12 years	\$188.00 NDT included
Phase 48	Cockpit & Cabin Halon FE	Every 72 mo.	\$188.00
Phase 49	Skin Joint & Doubler Inspection	1200 hours / 36 months	\$2,448.00 NDT included
Phase 50	Wing Attachment inspection	1200 hours / 36 months	\$2,514.00 NDT included
Phase 51	Oxygen Cylinder Hydro Test (NDT extra)	every 5 years	\$561.00
Phase 53	Copilot Side Window Inspect.	50 landings	\$235.00
Phase 54	Engine Minor Inspection	600 hrs/12 mos.	\$1,590.00
Phase 55	Lead-Acid Battery Inspection	per Battery Manual	\$188.00
Phase 56	ELT Inspection	Every 12 months	\$188.00
Phase 59	Copilot side window inspection	1st 150 hours after install	\$563.00
Phase 60	Honeywell standby control head	every 500 hours	\$198.00
Phase 61	I/B Lower Wing Spar	13,200 landings, ea 1200 Indgs thereafter	\$2,543.00
Phase 62	O/B Lower Wing Spar	15,600 landings, ea 1200 Indgs thereafter	\$2,543.00
Phase 63	Wing Spar Cap inspection	15,600 landings, ea 1200 Indgs thereafter	\$2,815.00
Phase MA	Wing Anti-Ice Crossover Valve	150 hours	\$306.00
Phase MC	Emer. Exit Door Inspection	1456 hours	\$123.00
Phase MD	Fuselage Exterior Skin inspect.	2523 hours	\$2,328.00
Phase ME	Pressure Bulkhead Webs	4450 hours	\$4,043.00
Phase MF	Aft Pressure Bulkhead	5000 hours	\$4,043.00
Phase MG	Nose Lndg Gear Fork	10,000 Indgs / then ea. 1000	\$245.00
Phase MI	Windows / Frames	Every 5130 hrs	T + M
Phase MJ	Cabin Skin Splice	Every 5900 hrs.	T + M
Phase MK	Pressure Bulkhead	Every 6725 hrs.	T + M
Phase ML	Vapor cycl system hour meter	Every 300 hours	T + M
Phase MM	Time limited dispatch maintenance check, SN -0751 and up	Every 250 hours	T + M
Engine Change			\$6,891.00
Certificate of Airworthiness			\$2,756.00
Prepurchase Evaluation			\$5,638.00
Aircraft Re-weigh			\$1,280.00

Flat rate prices include inspection labor. State and local taxes, discrepancy labor, parts, materials and freight are billed extra.
*NDT is not included except where noted.

Prices subject to change without notice. Product application and pricing may vary based on aircraft specifications and configuration.



Citation 560 XL DOC Inspection Services

Inspection	Description	Time Interval	Our price
Doc 1	Nose, Cockpit, Fuselage	ea 12 mos / 600 hrs	\$3,543.00
Doc 2	Thrust Reverser Lubrication	ea 12 mos / 600 hrs	\$3,406.00
Doc 3	Cabin, Lavatory, Windshields, Windows	ea 24 mos / 1200 hrs	\$4,089.00
Doc 6	Complete Inspection	ea 36 mos / 1800 hrs	1,089.98
Doc 7	Water separator, Flight Control Trim, Brake Cylinder	1600 hrs	Call for Price
Doc 8	Complete Inspection	ea 48 mos / 2400 hrs	\$13,761.93
Doc 11	Flight Control Inspection - static discharge system	first 48 mos, ea 24 mos thereafter	\$409.29
Doc 12	Life Vest	60 mo	\$544.26
Doc 13	CVR, Hydraulic, Cockpit, Empennage	every 72 months	\$3,542.81
Doc 16	Nose, Cabin, Cockpit, Horizontal, Vertical	96 mo	\$203.91
Doc 17	Vertical Stabilizer Pivot Fitting	6000 hrs / every 1600 hrs	\$134.96
Doc 18	Fuel Control Unit Throttle Lever	150 hrs	\$1,089.98
Doc 19	Thrust Reverser, Fuel Control Unit	300 hrs	\$1,226.41
Doc 20	Ni-Cad Main Battery	100 hrs / 12 mo	Call for Price
Doc 21	Concorde Lead Acid Main Battery	12 mo	Call for Price
Doc 22	Ozone Inspection	6600 hrs	Call for Price
Doc 25	Fuselage External Surface (Eddy Current)	7200 hrs	\$1,361.38

Flat rate prices include inspection labor. State and local taxes, discrepancy labor, parts, materials and freight are billed extra. NDT is not included except where noted.

Prices subject to change without notice. Product application and pricing may vary based on aircraft specifications and configuration.

Citation 560 XL DOC Inspection Services

Inspection	Description	Time Interval	Our price
Doc MB	Aft Engine Beam Inspection	first 3000 hrs, ea 1500 hrs thereafter	\$1,089.00
Doc MD	Fwd Pressure Bulkhead Eddy Current	first 6000 hrs / 10 years, ea 2400 hrs / 10 years thereafter	\$1,905.00
Doc ME	Doors, Aft Bulkhead, Skin Splices	15,000 hours	Call for Price
Doc MF	L & R Main Spar Skin Splices	7500 hrs, then ea 1400 hrs	Call for Price
Doc MG	Vert Stabilizer Rear Spar Cap	6500 hrs, then ea 3000 hrs	Call for Price
Doc MH	Vert Stab. Rear Spar Nested Angle	11,000 hrs, then ea 6000 hrs	Call for Price
Doc MI	Vert Stab. Rear Spar Strap	5000 hrs, then ea 2500 hrs	Call for Price
Doc MJ	L & R Upper Skin, Fwd Engine Beams	13,000 hours	Call for Price
Doc MK	Vert Stab. Fwd Spar Strap	11,500 hrs, then ea 9000 hrs	Call for Price
Doc ML	L & R Lower Wing Spar Skin Splice	11,500 hrs, then ea 3300 hrs	Call for Price
Doc MM	L & R Lower Wing Main Spar @ 114.57	11,000 hrs, then ea 4200 hrs	Call for Price
Doc MN	L & R Lower Wing Main Spar @ 131.07	9000 hrs, then ea 3400 hrs	Call for Price
Doc MO	L & R Lower Wing Main Spar @ 149.57	12,500 hrs, then ea 6100 hrs	Call for Price
Doc MP	Vapor Cycle Cooling System	every 300 hours	\$204.00
Doc MQ	n/a	every 170 hours	\$273.00
Doc MR	Vert Stab. Fwd Spar Strap @ WL 188	10,000 hrs, then ea 5000 hrs	Call for Price
Doc MS	Lower Wing Main Spars @ 131.07	8500 hrs, then ea 2500 hrs	Call for Price
Doc MT	Lower Wing Main Spars @ 149.57	10,000 hrs, then ea 4800 hrs	Call for Price
Doc MU	Lower Wing Main Spars @ 114.57	12,000 hrs, then ea 3200 hrs	Call for Price
Engine Change			Call for Price
Certificate of Airworthiness			Call for Price
Prepurchase Evaluation			Call for Price
Aircraft Re-weigh			Call for Price

Flat rate prices include inspection labor. State and local taxes, discrepancy labor, parts, materials and freight are billed extra. NDT is not included except where noted.



**Save money on maintenance, insurance, taxes and more!
Ask about our FlightTime aircraft management services.**

**Call 830-900-7032 ext 306 or visit
www.flighttime.com for more details!**

Prices subject to change without notice. Product application and pricing may vary based on aircraft specifications and configuration.

WWW.SkyWay-MRO.COM



Citation 525 Classic CJ & CJ1 Inspection Services

Inspection Document	Description	Time Interval	Our price
Doc 1	Vapor Cycle Cooling/Engine sys insp	300 hrs	\$603.00
Doc 2	Emer. Equip, O2 masks, Emer. power supply, Landing gear lube	12 months	\$1,326.00
Doc 3	CVR, Directional Gyro	24 months	\$361.00
Doc 4	O2 & N2 Hydrostatic Test	36 months	\$964.00
Doc 5	Engine fire, O2 Bottle & Regulator Hydrostatic Test	60 months	\$603.00
Doc 6	Portable Fire Extinguisher Inspection	72 months	\$220.00
Doc 7	Portable Fire Extinguisher Hydrostatic Test	144 months	\$220.00
Doc 8	Airframe & Engine Inspection	300 hrs / 24 mo.	\$4,581.00
Doc 9	Battery Capacity Check	600 hrs / 12 mo.	\$467.00
Doc 10	Complete Inspection	1200 hrs / 36 mo.	\$34,693.00
Doc 11	Flight Compartment Window Prism Inspection / Fuselage Skin Joint NDT	2400 hrs / 72 mo. then 1200 hrs / 36 mo.	\$3,088.00
Doc 12	ELT Inspection	12 months	\$563.00
Doc 13	A/S, Alt, ADC & Static	24 months	\$1,834.00
Doc 14	Landing Gear Wheels Inspection	per Maintenance Manual	Time & Materials
Doc 15	Corrosion Inspection - Exterior	14 days	\$622.00
Doc 17	NiCAD Battery check	100 hours	\$876.00
Doc 18	Pylon Firewall, Ignitor System Inspection	150 hours	T & M
Doc 21	Windshield bleed check	600 hrs / 24 mo.	\$879.00
Doc 22	Precooler check	1200 hrs. / then ea. 300	T & M
Doc 29	Window Frame, Cabin Door Locking Pins	7200 hrs / then ea. 5000	\$8,049.00
Doc 33	Door Seal Inspection	300 hrs / 12 mo.	\$447.00
Doc 36	Corrosion inspection	every 6 months	\$1,760.00

Flat rate prices include inspection labor. State and local taxes, discrepancy labor, parts, materials and freight are billed extra. NDT is not included except where noted.

Prices subject to change without notice. Product application and pricing may vary based on aircraft specifications and configuration.

Citation 525 Classic CJ & CJ1 Inspection Services

Inspection Document	Description	Time Interval	Our price
Doc MA	Cockpit side window inspection	300 hours	\$23,197.00
Doc MC	Cabin skin NDT inspection	1200 hours	\$2,156.00
Doc MD	Nose Landing Gear Fork inspection	5000 landings / then ea. 1000	\$1,760.00
Doc MF	Skin Splice	6000 hours	Call for Price
Doc MG	Fuselage Skin	6000 hours	Call for Price
Doc MH	Cabin door inspection	6000 hours, then ea. 3000	
Doc MI	Pressure Bulkhead	7200 hours, then ea. 2400	Call for Price
Doc MJ	Window / Door Frame	12,000 hours, then ea. 3000	Call for Price
Doc MK	Fwd Vertical Inspection	7900 hours, then ea. 5000	Call for Price
Doc ML	Retaining ring (SN 1 thru 0332)	9600 hours, then ea. 1200	Call for Price
Doc MM	Pressure Bulkhead (SN 0333 and up)	12,000 hours, then ea. 3000	Call for Price
Doc MN	Retaining ring (SN 0333 and up)	9600 hours, then ea. 1200	Call for Price
Doc MO	Vertical stab aft spar	15,200 hours, then ea. 5000 hours	Call for Price
Doc MP	Time limited dispatch maintenance checks	every 12 months / 250 hrs	Call for Price
FJ44 check 1		300 hours	\$1,467.00
FJ44 check 2		600 hours	\$1,779.00
FJ44 check 1 & 2		600 hours	\$1,779.00
Engine Change			\$7,856.00
Certificate of Airworthiness			\$3,073.00
Prepurchase Evaluation			\$6,602.00
Aircraft Re-weigh			\$1,427.00

Flat rate prices include inspection labor. State and local taxes, discrepancy labor, parts, materials and freight are billed extra. NDT is not included except where noted.



**Save money on maintenance, insurance, taxes and more!
Ask about our FlighTime aircraft management services.**

**Call 830-900-7032 ext 306 or visit
www.flightime.com for more details!**

Prices subject to change without notice. Product application and pricing may vary based on aircraft specifications and configuration.

WWW.SkyWay-MRO.COM



Citation 525A CJ2 Inspection Services

Inspection Document	Description	Time Interval	Our price
Doc 1	Emer Press Valve Ops check/ Vapor Cycle/ shimmy damper	300 hrs	\$603.00
Doc 2	Emer. Equip, O2 masks, Emer. power supply, Corrosion Inspection	12 months	\$2,743.00
Doc 3	CVR, Directional Gyro	24 months	\$361.00
Doc 4	O2 & N2 Hydrostatic Test	36 months	\$964.00
Doc 5	Engine fire, O2 Bottle & Regulator Hydrostatic Test	60 months	\$603.00
Doc 6	Portable Fire Extinguisher Inspection	72 months	\$220.00
Doc 7	Portable Fire Extinguisher Hydrostatic Test	144 months	\$220.00
Doc 8	Airframe & Engine Inspection	300 hrs / 24 mo.	\$4,581.00
Doc 9	Battery Capacity Check	600 hrs / 12 mo.	\$467.00
Doc 10	Complete Inspection	1200 hrs / 36 mo.	\$29,538.00
Doc 11	Flight Compartment Window Prism Inspection / Fuselage Skin Joint NDT	2400 hrs / 72 mo. then 1200 hrs / 36 mo.	\$3,088.00
Doc 12	ELT Inspection	12 months	\$563.00
Doc 13	A/S, Alt, ADC & Static	24 months	\$1,834.00
Doc 14	Landing Gear Wheels Inspection	per Maintenance Manual	Time & Materials
Doc 15	Corrosion Inspection - Exterior	14 days	\$622.00
Doc 17	NiCAD Battery check	100 hours	\$876.00
Doc 18	Pylon Firewall, Ignitor System Inspection	n/a	T + M
Doc 19	Under Floor Inspection	5000 hours	\$8,049.00

Flat rate prices include inspection labor. State and local taxes, discrepancy labor, parts, materials and freight are billed extra. NDT is not included except where noted.

Prices subject to change without notice. Product application and pricing may vary based on aircraft specifications and configuration.

Citation 525A CJ2 Inspection Services

Inspection Document	Description	Time Interval	Our price
Doc 21	Windshield bleed check	600 hrs / 24 mo.	\$879.00
Doc 22	Compression check - 800 hours	800 Aircon hours	\$603.00
Doc 23	Compression check - 1500 hours	1500 Aircon hours	\$603.00
Doc 24	Cabin Door Check	300 hours / 12 months	\$447.00
Doc 25	Engine Mount Inspection	4000 hours	\$578.00
Doc 26	Corrosion inspection	every 6 months	\$1,760.00
Doc MA	Cockpit side window inspection	300 hours	\$3,405.00
Doc MC	Cabin skin NDT inspection	1200 hours	\$2,156.00
Doc MD	Pressure Bulkhead	1425 hours	\$3,609.00
Doc ME	Nose Landing Gear Fork inspection	5000 landings / then ea. 1000	\$1,760.00
Doc MF	Fwd/Aft Web-Beam	2550 hours	Call for Price
Doc MG	Fuselage Skin Top Stringer	2800 hours	Call for Price
Doc MH	Fwd Press Bulkhead / Cabin Door	3100 hours	Call for Price
Doc MI	Wing / Aft Pressure Bulkhead	4950 hours	Call for Price
Doc MJ	Emer. Exit / Door Frame	5000 hours	Call for Price
Doc MK	Cabin Skin Door / Wing	5050 hours	Call for Price
Doc ML	Fwd / Aft Bulkhead Retaining Ring	5050 hours	Call for Price
Doc MM	Cabin Lower Skin Splice	6000 hours	Call for Price
Doc MN	Retaining ring (SN 0333 and up)	9600 hours, then ea. 1200	Call for Price
Doc MO	Fwd engine beam Upper Cap (SN 0300 and On)	5300 hours	Call for Price
Doc MP	Fwd engine beam aft upper angle (SN -0001 to -0299)	8628 hours	Call for Price
FJ44 check 1		150 hours	\$1,467.00
FJ44 check 2		300 hours	\$1,779.00
Engine Compressor Wash		150 hours	\$1,779.00
Engine Change			\$7,856.00
Certificate of Airworthiness			\$3,073.00
Prepurchase Evaluation			\$6,602.00
Aircraft Re-weigh			\$1,427.00

Flat rate prices include inspection labor. State and local taxes, discrepancy labor, parts, materials and freight are billed extra. NDT is not included except where noted.



**Save money on maintenance, insurance, taxes and more!
Ask about our FlightTime aircraft management services.**

**Call 830-900-7032 ext 306 or visit
www.flighttime.com for more details!**

Prices subject to change without notice. Product application and pricing may vary based on aircraft specifications and configuration.

WWW.SkyWay-MRO.COM



Citation 525B CJ3 Inspection Services

Inspection Document	Description	Time Interval	Our price
Doc 1	Emer Press Valve Ops check/ Vapor Cycle/ shimmy damper/cabin door	300 hrs	\$1,733.00
Doc 5	Emer. Equip, O2 masks, Emer. power supply, Corrosion Inspection	every 12 months	\$2,743.00
Doc 6	CVR/FDR Inspection	every 24 months	\$232.00
Doc 7	N2 Hydrostatic Test	every 36 months	\$361.00
Doc 8	External Wing-Inspection	every 48 months	\$1,022.00
Doc 9	Cockpit & Cabin Halon FE insp/LG wheel wells/ cabin below floor	every 72 months	\$7,942.00
Doc 10	Cockpit & Cabin Halon FE Hydrostatic	every 12 years	\$220.00
Doc 11	Cabin door and lock Lube	300 hours / 12 months	\$431.00
Doc 12	Autopilot F/T & W/S bleed air Ops test	600 hours / 24 months	\$431.00
Doc 14	Landing Gear sys-functional check	1200 hours / 24 months	\$751.00
Doc 16	Main Gear oleo/ trailing link insp	2400 hours / 48 months	\$10,975.00
Doc 17	Emergency Locator Transmitter	every 12 months	\$232.00
Doc 18	A/S, ALT, ADC & Static	every 24 months	\$1,834.00
Doc 19	Fire Ext Inspection	6 months	\$144.00
Doc 20	5 Year Bottles - Hydro	every 60 months	\$603.00
Doc 22	Airframe Inspection	1200 hrs. / 36 months	\$30,316.00
Doc 23	Airframe ops check/FT	300 hours / 24 months	\$1,270.00
Doc 24	Flight Compartment Window Prism Inspection / Fuselage Skin Joint NDT	2400 hours / 72 months	\$3,289.00
Doc 25	Oxygen Hydro	60 months	\$603.00
Doc 29	Battery Inspection	every 100 hours	\$467.00

Flat rate prices include inspection labor. State and local taxes, discrepancy labor, parts, materials and freight are billed extra. NDT is not included except where noted.

Prices subject to change without notice. Product application and pricing may vary based on aircraft specifications and configuration.

Citation 525B CJ3 Inspection Services

Inspection Document	Description	Time Interval	Our price
Doc 32	Landing Gear Wheel Inspection	per Maintenance Manual	T & M
Doc 34	Airplane Wash	14 Days	\$622.00
Doc 35	Battery Capacity Check	per Battery Manual	\$603.00
Doc 38	Standby Gyro Power	every 6 months	\$431.00
Doc 39	Under Floor Inspection	5000 hours	\$8,049.00
Doc 40	Corrosion Inspection	every 6 months	\$1,760.00
Doc 41	Vapor Cycle 500 Comp hour Maint	500 hours	\$232.00
Doc 42	Emer 121.5 Com 1 and Com 2	11950 hours	Call for Price
Doc MA	Cockpit side window inspection	500 hours	Call for Price
Doc MC	Side Window Cabin skin inspection	2000 hours	Call for Price
Doc MD	Fwd / Aft Pressure Bulkhead inspection	1500 hours	\$4,156.00
Doc ME	Nose Landing Gear Fork inspection	5000 landings / 1000 landings thereafter	Call for Price
Doc MF	Fwd / Aft Pressure Bulkhead inspection	2500 hours	Call for Price
Doc MG	Emer. Exit / Door Frame	5000 hours	\$5,016.00
Doc MH	Fwd / Aft Bulkhead Retaining Ring	5050 hours	\$3,389.00
Doc MI	Fwd engine flange and cap	6000 hours	Call for Price
Doc MJ	Cockpit upper skin Inspection	3000 hours	Call for Price
Doc MK	TLD Ops check	4 mths or 120 hours	\$135.00
Doc ML	Attachment Hole #2 Inspection	7500 hours	Call for Price
Doc MM	Main Spar Lower Cap WS 166.33	8000 hours	Call for Price
FJ44 check 1		150 hours	\$1,467.00
FJ44 check 2		300 hours	\$1,779.00
Engine Compressor Wash		150 hours	T & M
Engine Change			\$57,856.00
Certificate of Airworthiness			Call for Price
Prepurchase Evaluation			Call for Price
Aircraft Re-weigh			Call for Price

Flat rate prices include inspection labor. State and local taxes, discrepancy labor, parts, materials and freight are billed extra. NDT is not included except where noted.



Save money on maintenance, insurance, taxes and more!
Ask about our FlightTime aircraft management services.

Call 830-900-7032 ext 306 or visit
www.flighttime.com for more details!

Prices subject to change without notice. Product application and pricing may vary based on aircraft specifications and configuration.

WWW.SkyWay-MRO.COM

A Brief History of Single-Pilot Citations

Cessna Aircraft Co. earned FAR Part 25 transport category type certification for its original Citation 500 in September 1971 and the Model 550 Citation II in March 1978. Part 25 aircraft require at least two crew members in the cockpit due to back-up requirements in the event of crew incapacitation. The pilot-in-command must be type-rated, but the second-in-command need only meet the requirements of Part 61.55.

In 1977, Cessna elected to pursue Part 23 normal category certification for a slightly modified version called the Model 501. Under the requirements of Part 23, aircraft with MTOWs less than 12,500 pounds could be OK'd for single-pilot operations if the FAA deemed the workload acceptable. The Citation 501, or Citation I/SP, easily passed the FAA's single-pilot workload test. The pilot-in-command still needed a type rating, but a properly qualified PIC no longer needed an SIC.

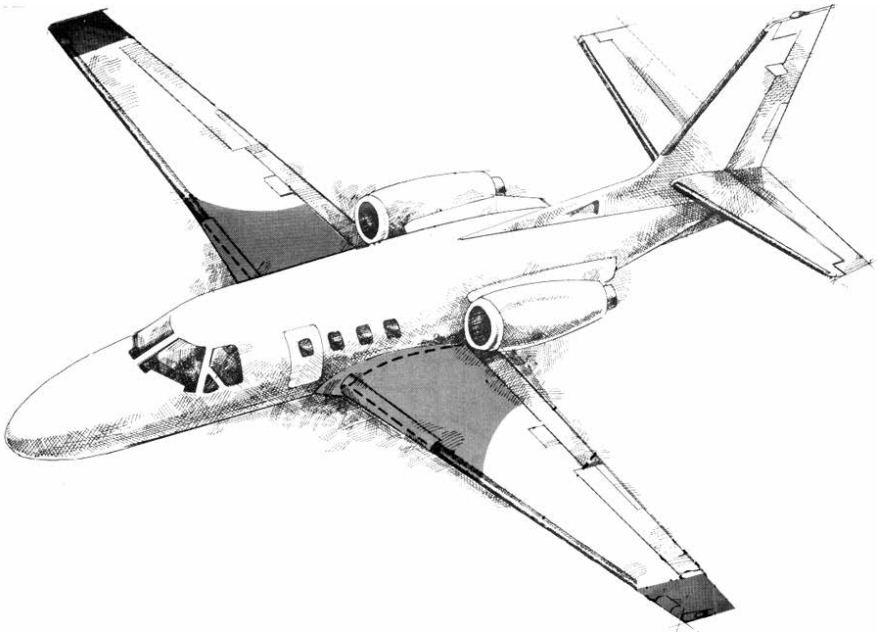
For the Citation II, Cessna pursued both Part 25 transport category certification for the basic Model 550, with a 13,300-pound MTOW, and Part 23 normal category certification for the Model 551 Citation II/SP, a 12,500-pound MTOW limited aircraft.

The 1984 development of the 14,700-pound MTOW Citation S/II made it impractical to spin off a 12,500-pound Part 23 version without severe operational limitations. Cessna asked the FAA for an operational exemption to Part 25's requirement for two crewmembers, arguing that the safety of the Citation I/SP and II/SP enabled the S/II to be flown safely by a single pilot with a CE500 common type-rating. The FAA agreed and granted what has become known as the Cessna Exemption. Cessna later applied for extensions of the single-pilot exemption for the Citation 500, 550 and 560 models for pilots with the CE500 common type-rating, eliminating the need for separate single-pilot, Part 23 versions of 500-series aircraft. **Sierra Industries** of Uvalde, Texas earned single-pilot operational exemptions for Part 25 500-series Citations with their **Eagle** and **Longwing** modifications.

When Cessna initiated development of the Model 525 CitationJet in the late 1980s, the FAA determined that it was sufficiently different from other Citation 500 models to warrant a separate type-rating. The CJ would be certified as a Part 23 aircraft, making it eligible for single-pilot operations. Cessna, though, pursued both CE-525 two-pilot and CE-525S single-pilot type-rating approvals, thereby giving operators a choice of flying alone or with an SIC.

Citation Development History

- **Fanjet 500**, later **Citation 500**: original production version first flown September 1969. Production version entered service 1971. SN thru 500-0349.
- **Citation I**: enhanced performance version of the Citation 500, introduced 1976. The wingspan was longer, higher gross operating weight, and more powerful JT15D-1A engines. SN 500-0350 and up.
- **Citation I/SP**: Single pilot version of the Citation I, introduced in 1977. Last production version of the original Citation, last one delivered in 1985. The I/SP is certified for single-pilot operation, but the I and 500 are not.
- **Citation II**: development of the Citation I originally designated the Citation 550, featuring a fuselage stretch (max seating of 10 pax), longer span wings, more powerful JT15D-4 engines, and increase baggage storage capacity. Certified in 1978.
- **Citation II/SP**: single-pilot version of the Citation II, dubbed the 551.
- **Citation S/II**: The S/II features a new supercritical wing based on the Citation III, and newer JT15D-4B engines. Certified in 1984, it replaced the Citation II in production until 1985 when the Citation II was reintroduced.
- **Citation III**: Originally the Citation 650, the III is a larger all-new design to supplement the smaller Citation I/II/V series. Features a swept supercritical wing, T-tail, new fuselage, and Garrett TFE731 turbofans. Certified in 1982.
- **Citation VII**: certified in 1992, the Citation VII is a Citation III with systems improvements and more powerful Garrett engines. The VII is still in production, replacing the III/VI series.
- **CitationJet**: The Model 525 utilized the original 500 series forward fuselage with an all new wing, new Williams FJ44 engines, and a T-tail. EFIS avionics are standard, as is single-pilot operation. Certified in 1993. M2 variant debuted in 2013 with improved performance and avionics.
- **CitationJet CJ1**: A CitationJet 525 with Collins Pro Line 21 cockpit avionics suite and an increased operational gross weight (primarily fuel/payload).
- **CitationJet CJ2**: stretched CJ1 with more powerful FJ44-2C engines, longer span wings and larger tail.
- **CitationJet CJ3**: further stretch of the CJ2 with even longer wings, larger tail, and FADEC controls on more powerful FJ44 engines. Certified in 2004.
- **CitationJet CJ4**: additional stretch of the CJ3, introduced in 2010.
- **Citation Mustang**: shorter-cabin entry-level 4 to 5-passenger "VLJ," introduced in 2006.



Citation Sierra-Mod Aircraft Manual Supplements

		Manual Supplement Latest Revision Level						
Description	Price (ea.)	Longwing	Eagle	Eagle SP	Eagle 400'	FJ44 Eagle II	FJ44 Stallion	FJ44 Super II
Flight Manual Supplement	\$500.00	Rev. 2	Rev. 13	Rev. 7	Rev. 2	Rev. A	Rev. IR	Rev. A
Metric Flight Manual Supplement	\$500.00	Rev. IR	Rev. 11	Rev. 11	n/a	n/a	n/a	n/a
Operating Manual Supplement	\$500.00	Rev. 1	Rev. 1	Rev. 1	n/a	n/a	n/a	Rev. IR
Parts Manual Supplement	\$500.00	Rev. IR	Rev. 1	Rev. 1	n/a	Rev. A	Rev. IR	n/a
Maintenance Manual Supplement	\$500.00	Rev. 1	Rev. 1	Rev. 1	Rev. IR	Rev. IR	Rev. IR	Issue 2
Weight & Balance Manual Supplement	\$500.00	n/a	Rev. IR	Rev. IR	n/a	n/a	n/a	n/a

Note: Manual supplements are supplied as Acrobat PDF files. Printed manuals are no longer available.

Prices subject to change without notice. Product application and pricing may vary based on aircraft specifications and configuration.



Uvalde Flight Center

A comfortable, friendly experience awaits you at the Uvalde Flight Center, one of the premier full-service Fixed Base Operators (FBO) in the South Texas area. Co-located with SkyWay MRO and Lancair International at Uvalde's Garner Field Airport, UFC offers a comprehensive array of aircraft support services, including such items as:

- AvGas and Jet-A Fuel Service
- Wash & Wax Services
- Pilot Supplies
- Self-Serve 100LL AvGas
- Hangar Services
- Ground School
- Lubrication, Oil & Aeroshell
- Aircraft Rentals
- Hertz Car Rental

Operating in Uvalde for nearly 40 years, UFC features a well-appointed lounge with beverage services, wireless internet, conference room and on-site Hertz automobile rental. Concierge services are available for hotel and meeting room reservations, valet services, full-service catering and area recreational arrangements.

Please call 830-279-0877 for information or visit us on the web at www.uvaldeflightcenter.com.

Warbirds and More

Between SkyWay leaders' Mark and Conrad Huffstutler's personal aircraft collection and the adjacent *Airplane Museum of South Texas*, Uvalde boasts an impressive variety of vintage military and civilian aircraft on display. From historic aircraft like a T-28 Trojan and Waco Biplane to unique small planes like the Bede BD-5, you'll find plenty of interesting aircraft within a short walk of the Uvalde Flight Center. Be sure to ask for a tour when you visit Uvalde.



Garner Field Airport • 301 Sul Ross Drive • Uvalde, TX 78801



SkyWay's Custom Manufacturing Services

State-of-the-Art Machining and Hometown Convenience

Whether it's for warbird restoration or just a custom BBQ pit, if you're looking for customized high-tech fabrication capabilities, you need look no further than Uvalde. SkyWay's Uvalde-based sheetmetal and machine shop capabilities are available to nearby Texas communities and to our worldwide customer base.

Our facility features the latest in sophisticated CNC machining technology, including one of the largest abrasive waterjet cutting machines in the region. A wide variety of forming and fabrication technologies are on-site, including CNC milling, alodyning, sheet metal bending, filtered paint booths and more. Our flexible and programmable equipment is ideal for short-to-medium production runs or even one-off prototyping.

Aerospace Quality at Hometown Prices

SkyWay's machine shop facilities meet stringent FAA requirements for aerospace manufacturing. That means you can count on the same attention to detail and quality craftsmanship as our mission-critical components for multi-million dollar business aircraft.

Our highly experienced technicians will help you bring your design to life, whether in aluminum, steel, or something more exotic. In fact, our waterjet cutter is perfect for custom marble or granite countertops or unusual signage and display projects. And waterjet cutting provides exceptionally smooth edges requiring little or no finishing.



Slice right through 6-inch steel or create high-precision instrument panels with our OMAX waterjet cutter.

Waterjet Materials Cutting

Our sophisticated high-speed OMAX waterjet cutter utilizes a high pressure jet of water and abrasive to accurately and quickly cut a wide variety of materials, including traditionally 'un-cutttable' materials like ceramics, glass, and stone. Unlike high-temperature lasers, waterjet machining eliminates warping and heat-induced changes in material properties.

Manufacturing/Machine Shop Capabilities:

- Waterjet Cutting up to 48" x 96"
- Blue Elephant CNC Router
- CNC Milling & Lathe Operations
- Tube Bending
- Sheet Metal Bending
- Drilling / Tapping / Routing
- TIG, MIG and Oxy/Acetylene Welding
- Alodyne surface treatment
- Filtered Air Paint Booth
- Sheet Metal Fabrication
- Short-Run Contract Manufacturing
- Engineering & Design Consulting

Call your friendly sales representative today for a free quote on your next custom project!



*The world's leading authority
on the classic
Cessna Citation business jet.*

830.900.7032
skyway-mro.com

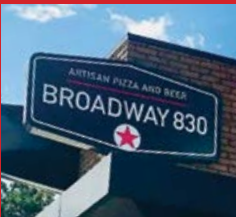
When in Uvalde, try our Unique Local Eateries!

Hand-Crafted Artisan
Pizzas & Wings
Craft & Domestic Beers
Creative Cocktails
Patio Dining

Coffee House & Café
All Day Breakfast/Brunch
Coffees, Teas & Espresso
Smoothies & Shakes
Sandwiches & Wraps

Historic 1940's style
Airport Café
All-American Dining
Craft & Domestic Beers
Live Music Events

The only soda fountain
between San Antonio
and El Paso —
Serving all your old
fashioned favorites.



100 East Main St. Uvalde TX
830-900-7076
broadway830.com



2001 East Main St. Uvalde TX
830-900-7183
thelocalfix.com



249 Airport Blvd. Uvalde TX
830-900-3113
hangar6aircafe.com



201 North Getty, Uvalde TX
830-900-7300
uvalderexall.com



ChowNow

